

MADE WITH PRIDE  
IN THE

USA



# NAVIGATOR

Truck Mounted Forklifts



Competitive Financing Available



4,500 to 7,000 Pound Capacities-All Wheel Drive & Two Wheel Drive

Nav-Reach Extension Mechanism-Water Cooled Diesel, All Terrain, Truck Mounted Forklifts

CONTACT US AT (228) 864-6293 or go to our website [www.navigatorforklift.com](http://www.navigatorforklift.com)



NAVIGATOR

# FORKLIFT MODELS



## 4500 SERIES

APPLICATIONS: SOD, MULCH, FEED, FERTILIZER AND GENERAL BUILDING MATERIALS.



For almost four decades, Chrisman Manufacturing Inc. has been producing the Navigator line of truck mounted forklifts. The philosophy has been the same from the beginning... Build a simple, durable and easily maintained machine and customers will return. Here at Navigator we take pride in offering one on one support straight from the factory. No other manufacturer can claim to offer the level of support we provide.

## 5500 SERIES

APPLICATIONS: LUMBER, DRYWALL, GENERAL BUILDING MATERIALS, BRICK, BLOCK, PAVERS, POOL CONSTRUCTION MATERIALS AND SCAFFOLDING.

## 5000 SERIES

APPLICATION: SOD, LUMBER, DRYWALL, GENERAL BUILDING MATERIALS.



## 6000 SERIES

APPLICATIONS: LUMBER, DRYWALL, GENERAL BUILDING MATERIALS, BRICK, BLOCK, PAVERS, POOL CONSTRUCTION MATERIALS AND SCAFFOLDING.

While the simple, durable design remains, Chrisman Manufacturing takes full advantage of new and improved components. Every component chosen for the Navigator is rigorously tested to make sure it is of the highest Quality. Our desire for complete customer satisfaction remains our primary goal.



# ALL WHEEL DRIVE MODELS



*MAST IS CONSTRUCTED OF 6.25" HARDENED STEEL MAST CHANNEL*



*GAUGES ARE LOCATED IN FRONT OF THE OPERATOR*



*INTEGRATED COUNTERWEIGHTING OFFERS INCREASED PERFORMANCE AND STRENGTH*



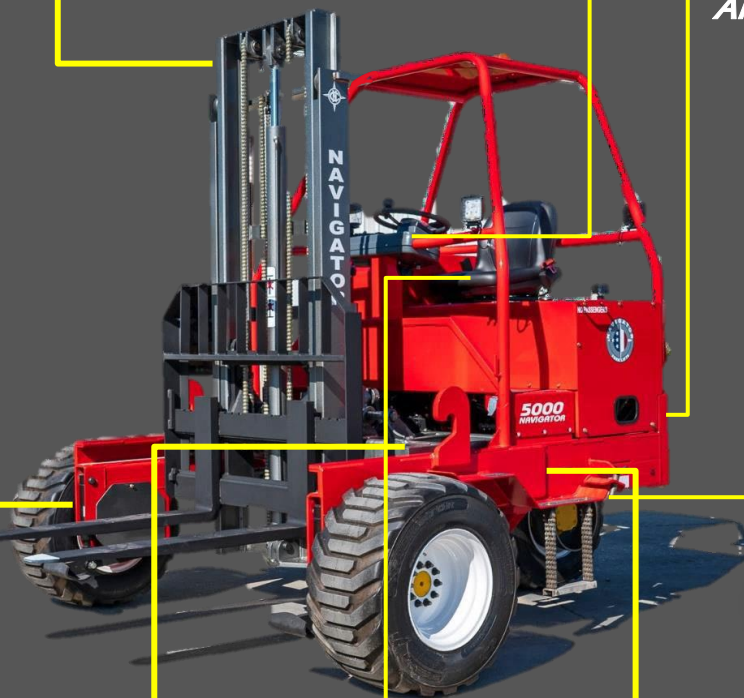
*WHEEL MOTOR HUBS ARE GUSSETED FOR STRENGTH*



*SIMPLIFIED STEERING MECHANISM OFFERS STRENGTH AND EASY MAINTENANCE*



*ADJUSTABLE GUIDE BLOCKS KEEP SLIDE CARRIAGE STRAIGHT IN THE FRAME*



*ONE PIECE FRAME DESIGN OFFERS INCREASED STRENGTH & EFFECTIVELY TRANSFERS ROAD-SHOCK TO THE TIRES WHEN MOUNTED.*

*CENTER POSITIONED SEAT PROVIDES OUTSTANDING COMFORT, SAFETY AND VISION*



## TIRE OPTIONS



Optional self sealing agricultural Bar Tread tire adds increased traction in severe conditions.

## NAV-REACH

“Nav Reach” extension mechanism allows operators to unload a truck or trailer from one side.



## REMOTE LIFT AND LOWER




Optional Remote lift & lower ground controls



ADDITIONAL OPTIONS- Block heater, Block forks and Lumber forks,

# SPECIFICATIONS



<b>Spec./Model</b>	<b>RT-4500</b>	<b>RT-5000</b>	<b>RT-5500</b>	<b>RT-6500</b>
Lift Capacity @ 24 in. load center	4500 Lbs.	5000 Lbs.	5500 Lbs.	6500 Lbs.
Lift Height (standard)	10 Ft.	10 Ft.	12 Ft.	12 Ft.
Lift Height (optional)	8 Ft.	12 Ft.	10 Ft.	10 Ft.
Overall Height	98.5 In.	104.5 In.	104.5 In.	104.5 In.
Minimum Mounted Overhang	64 In.	75 In.	75 In.	75 In.
Width	100 In.	100 In.	100 In.	100 In.
Weight (Ready To Operate)	4582 Lbs.	5100 Lbs.	5800 Lbs.	6250 Lbs.
Mast Tilt	8° 	8° 	8° 	8° 
Side Shift	5 In. (optional)	5 In.	5 In.	5 In.
Frame Opening	60 In.	60 In.	60 In.	60 In.
Fork Travel	30 In.	30 In.	30 In.	30 In.
Drive Tires	(2) 31x15.5x15	(3) 31x15.5x15	(3) 31x15.5x15	(3) 31x15.5x15
Transmission	Hydrostatic drive	Hydrostatic drive	Hydrostatic drive	Hydrostatic drive
Engine	56 HP TIER4 Kohler Turbo Diesel	56 HP TIER4 Kohler Turbo Diesel	56 HP TIER4 Kohler Turbo Diesel	56 HP TIER4 Kohler Turbo Diesel
Max Travel Speed	8 Mph.	8 Mph.	8 Mph.	8 Mph.
Nav-Reach (optional)	Yes	Yes	Yes	Yes
Automotive Control (optional)	No	Yes	Yes	Yes

\*Specifications are based on standard model machines. The above specifications are not binding. Chrisman Manufacturing reserves the right to make changes and/or improvements without prior notice



Chrisman Manufacturing, Inc.

7399 Beatline Road  
Long Beach, MS 39560

Phone: (228) 864-6293

[WWW.navigatorforklift.com](http://WWW.navigatorforklift.com)